

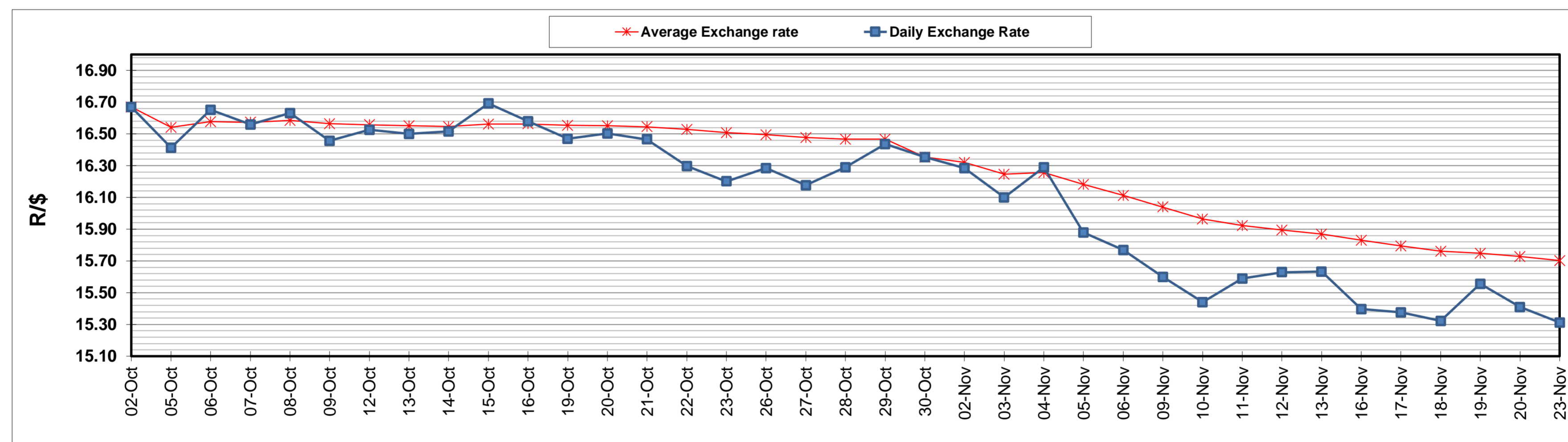
	PETROL 95 ULP	PETROL 93 ULP & LRP	DIESEL 0.05%	DIESEL 0.005%	ILL. PAR.
GAUTENG PUMP PRICE (SA c/l) AS FROM 04/11/2020	1,459.000	1,439.000	-	-	-
WHOLESALE PRICE (SA c/l) AS FROM 04/11/2020	-	-	1,225.560	1,227.960	655.828
SINGLE NATIONAL MAXIMUM RETAIL PRICE	-	-	-	-	818.000
BASIC FUEL PRICE - 23/11/2020 (SA c/l)	490.558	484.445	508.936	509.784	487.814
PRESS RELEASE CONTRIBUTION TO BFP 04/11/2020 - 23/11/2020 (SA c/l)	506.470	496.470	474.630	477.030	451.128
UNIT OVER/(UNDER) RECOVERY - 23/11/2020 (SA c/l)	15.912	12.025	(34.306)	(32.754)	(36.686)
AVERAGE BASIC FUEL PRICE 30/10/2020 - 23/11/2020	479.268	471.320	481.844	483.977	463.972
AVERAGE UNIT OVER/(UNDER) RECOVERY 30/10/2020 - 23/11/2020	31.967	29.914	(5.096)	(5.006)	(15.491)

ANALYSIS MOVEMENT OF AVERAGE OVER/(UNDER) RECOVERY

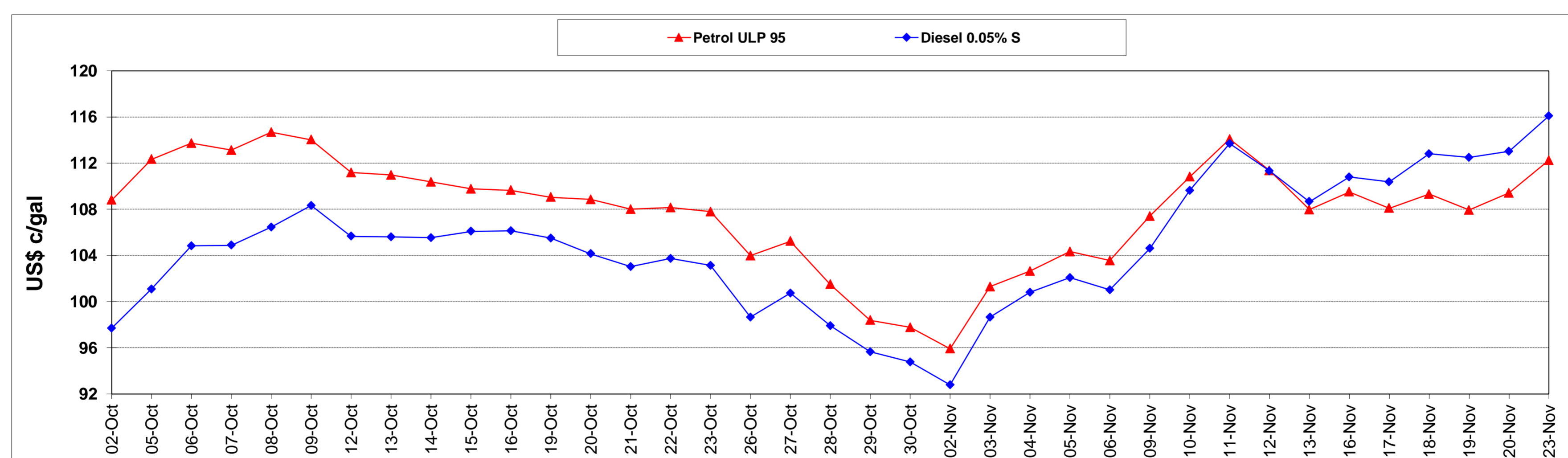
	PETROL 95	PETROL 93	DIESEL 0.05%	DIESEL 0.005%	ILL. PAR.
- MOVEMENT IN INTERNATIONAL PRODUCT PRICES	8.670	7.004	(28.519)	(28.532)	(38.045)
- MOVEMENT IN EXCHANGE RATE	23.297	22.911	23.423	23.526	22.554
AVERAGE UNIT OVER/(UNDER) RECOVERY 30/10/2020 - 23/11/2020	31.967	29.914	(5.096)	(5.006)	(15.491)

R/\$ EXCHANGE RATE - (R/\$15.3125 - 23/11/2020)

EXCHANGE RATE USED IN BASIC FUEL PRICE



INTERNATIONAL PRODUCT PRICES OF BASKET USED IN BASIC FUEL PRICE



BASIC FUEL PRICE IN SA CENTS PER LITRE

